



1305/240 Bunda Street City ACT

2 2 2

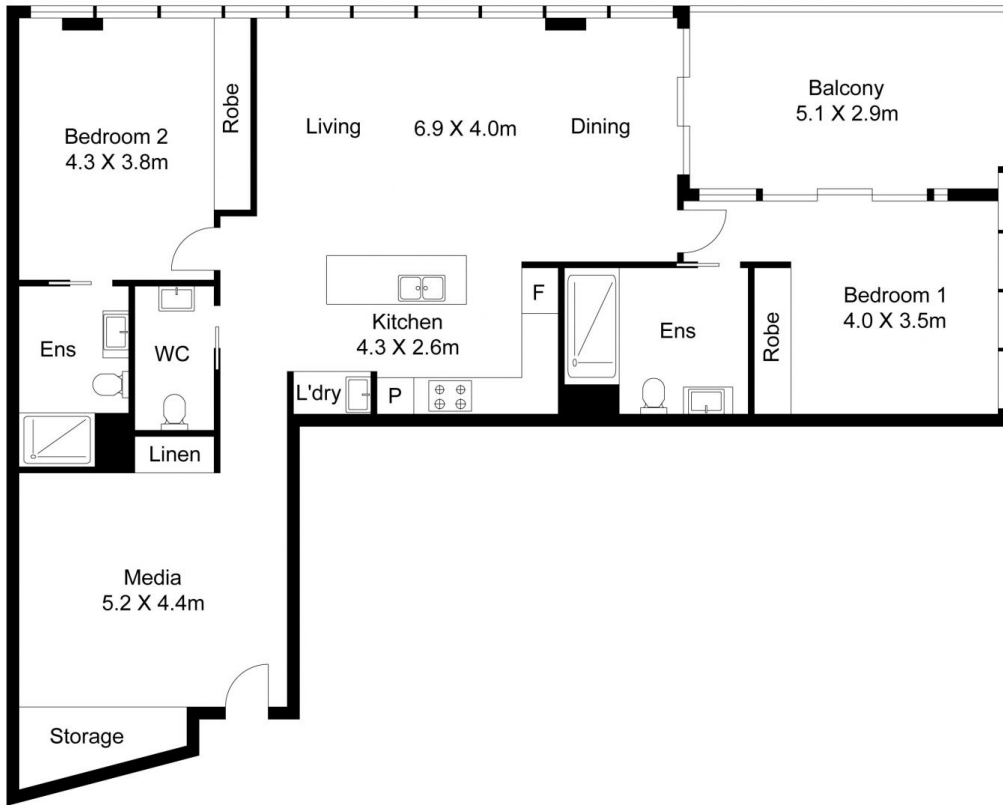
This spacious and stunning two-bedroom apartment located in one of the city's finest residential complexes, 'Manhattan on the Park' is sure to please the most discerning buyer. The 13th floor apartment provides 112sqm of living (the largest of the two-bedroom units), a 16 sqm balcony and expansive views over Glebe Park to Mt Ainslie, Black Mountain and beyond. Superbly appointed, the apartment features open plan living, stylish kitchen with Bosch appliances and stone benchtops, two bedrooms, designer ensuite and bathroom, powder room, a second living area or media room and ample storage throughout. A luxurious lifestyle awaits with onsite access to a well-equipped gym, 25m pool, spa, barbeque facilities and all that the city has to offer on your doorstep.

Building Size : 112 sqm
View : <https://www.seminaracoproperties.com.au/sale/act/inner-north/city/residential/apartment/7988883>

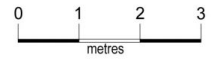


John Sneddon
02 5105 5485

? North facing apartment with 112sqm of living and 16sqm



1305/240 Bunda Street, Canberra City



Whilst every attempt has been made to ensure the accuracy of the floor plan contained here, measurements of doors, windows, rooms and any other items are approximated and no responsibility is taken for any error, omission or mis-statement. This plan is for illustrative purposes only and should be used as such by any prospective purchaser. The service, system and appliances shown have not been tested and no guarantee as to their operability or efficiency can be given.